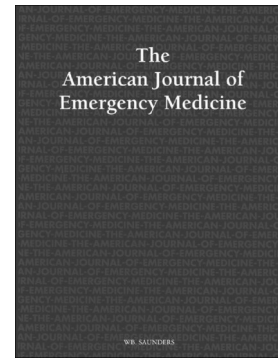


Palliative care in the emergency department during a COVID-19 pandemic

Jessica K. Eygnor, Alexander M. Rosenau, David B. Burmeister, David M. Richardson, Amy M. DePuy, Allison N. Kayne, Marna Rayl Greenberg



PII: S0735-6757(20)30594-5
DOI: <https://doi.org/10.1016/j.ajem.2020.07.004>
Reference: YAJEM 159179

To appear in: *American Journal of Emergency Medicine*

Received date: 29 June 2020

Revised date: 30 June 2020

Accepted date: 1 July 2020

Please cite this article as: J.K. Eygnor, A.M. Rosenau, D.B. Burmeister, et al., Palliative care in the emergency department during a COVID-19 pandemic, *American Journal of Emergency Medicine* (2020), <https://doi.org/10.1016/j.ajem.2020.07.004>

This is a PDF file of an article that has undergone enhancements after acceptance, such as the addition of a cover page and metadata, and formatting for readability, but it is not yet the definitive version of record. This version will undergo additional copyediting, typesetting and review before it is published in its final form, but we are providing this version to give early visibility of the article. Please note that, during the production process, errors may be discovered which could affect the content, and all legal disclaimers that apply to the journal pertain.

Palliative Care in the Emergency Department during a COVID-19 Pandemic

Authors:

Jessica K. Eygnor, DO^a
Alexander M. Rosenau, DO^a
David B. Burmeister, DO, MBA^a
David M. Richardson, MD^a
Amy M. DePuy, MD^b
Allison N. Kayne, BS^a
Marna Rayl Greenberg, DO, MPH^a

All authors are affiliated with the Lehigh Valley Hospital and Health Network/University of South Florida Morsani College of Medicine, Lehigh Valley Campus, Allentown, PA, USA

^aDepartment of Emergency and Hospital Medicine

^bDepartment of Clinical Informatics

The authors declare that there is no conflict of interest regarding the publication of this article. The authors have no outside support information, conflicts or financial interest to disclose and this work has not been published elsewhere.

Authors Contribution: All authors provided substantial contributions to the manuscript

Author Acknowledgements: The authors would like to acknowledge the expert skills of the following workgroup members who helped bring this project to fruition: Jennifer E. Allen, MD, Cindi Boderman, CRNP, Micheline Brunner, MSN, RN-BC, Zhe Chen, MD, Elie N Jabbour, PharmD, MBA, Anita Kurt, PhD, RN, Sarah Nicklin, MD, Nadine Opstbaum, Patricia Poblete, RN, BSN, Kimberly Sperring, CRNP, Jackie Stine, BSN, Donna Stevens, MHA, Stefanie Toman, CRNP, Jeanne Vogt, RN, MSN, MBA, CHPN, Alice Vrsan, MSN

Corresponding Author contact/reprint information:

Marna Rayl Greenberg, DO, MPH

1909 Earls Court
Allentown, PA 18103
610-967-3140 (h)
610-360-4849 (c)
mrgdo@ptd.net

Keywords: COVID-19; coronavirus; palliative care; emergency department

Short running head: Palliative Care in the ED for COVID-19

Word Count: 1185

Palliative Care in the Emergency Department during a COVID-19 Pandemic

The COVID-19 pandemic is challenging the healthcare system.¹ It is crucial for physicians to provide an opportunity for shared decision making and ascertain, without prejudice, a patient's goals of treatment and advanced directives.² Palliative care support at the point of initial care has the potential to play a vital role in assisting in ascertaining the patient's wishes for treatment, especially in the setting of a busy emergency department (ED). Palliative care specialists provide individualized, compassionate care including symptom control for those choosing to forgo aggressive interventions like ventilator support.³

As this pandemic progresses, the role of ED physicians has become ever more demanding with high acuity COVID-19 patients. With clear education concerning the impact and outcomes of proposed treatments, some patients' goals may be more aligned with aggressive interventions while others may choose a less aggressive palliative approach focused on ameliorating symptoms.⁴ Despite this evolving role, there is limited existing literature available for ED physicians on how to provide system wide palliative care services to COVID-19 patients. As such, we set out to develop and report on a palliative program created to meet the needs of the ED/hospital networks and our patients, both in decision making and subsequent palliative care in the time sensitive, high pressure milieu of the ED.

Our goal was to build and align infrastructure to allow more in depth palliative care conversations with the help of specialized providers in the ED and to support the network's six individual hospitals. We set out to develop schematics for clinicians to guide them in how to

provide brief conversations and establish palliative care consult services for COVID-19 patients (Figure 1).

A stakeholder workgroup was created to focus on three areas: Education of providers; Developing the infrastructure to support the plan (involving telehealth, managing language barriers, evaluation for providing 24/7 care at all sites); and working with hospitalists and hospice teams to develop cohort housing.

The clinician's tool (Appendix 1) included an abbreviated shared decision tool from the National Hospice and Palliative Care Organization⁵ and a list of medications that were appropriate for symptomatic treatment.⁶ Additionally a flow diagram from the Center to Advance Palliative Care for relief of dyspnea⁷ and a conversation guide from the ACEP COVID-19 Field Guide was provided.⁸

Two EM physician champions (one with fellowship training in palliative medicine), oriented the palliative medicine team to the ED and provided 'at the elbow' support to clinicians in three of the ED sites about how to start conversations and utilize the palliative care team resource.

At the largest hospital, a palliative care nurse practitioner was stationed from 11a-9pm, 7 days a week. The remainder of the coverage was managed 'on call'. All 6 sites were set up with resources and a guideline for using tablet based technology for the palliative medicine consult. A series of guidelines for workflow were developed and distributed to the team from the IS department to help patients and providers understand how to use the tools to communicate and how to manage disinfecting devices (Appendix 2). After the consult was completed, the documentation in the electronic medical record provided immediate access to any existing

Physician's Orders for Life-Sustaining Treatment, Advance Care Plans, and “Do not resuscitate” status in the patient record.

The urban hospitals aligned cohorts for inpatient hospice. This project allowed for earlier identification of patients appropriate for palliative care in the emergency department setting so that patients could be cohorted to the most suited inpatient floor. This also prevented movement across inpatient floors. Because there were different resources available at the more rural sites, the hospitalist service managed patients there with comfort measures.

Factors like lack of knowledge about palliative care management can prevent providers from initiating palliative care.⁹ It has been reported that only 5% of palliative care consults done in the ED were initiated by ED providers and the consultation occurred days into the patient’s hospital stay.¹⁰

The unusual pattern of this disease to progress and unexpectedly worsen without any indication that the patient is deteriorating motivates earlier goals of treatment discussions.^{11,12} Additionally, while transmission of COVID-19 is primarily through droplet and fomite spread,¹³ the World Health Organization believes that airborne transmission may be possible when performing interventions that generate aerosols, such as manual ventilation, endotracheal intubation, or CPR.¹⁴⁻¹⁶ Therefore, if it is clear after early goals of care discussions that patients choose to forgo aggressive interventions, such as these, there is also added benefit for staff of avoiding potential unnecessary exposures.

Prior to this program initiative, it was common that a patient be admitted with the order, “Full Code by Default”. Further data needs to be collected on how these conversations change the orders placed for code status, the resources that are necessary to manage patient care as well

as evaluations of patient satisfaction of the program. ED providers' acceptance of palliative care specialist support in the ED environment was very positive and the prospect of continuing it after Covid-19, is already being entertained.

References

1. Ferguson L, Barham D. Palliative Care Pandemic Pack: a Specialist Palliative Care Service response to planning the COVID-19 pandemic. *Journal of Pain and Symptom Management*. 2020 Apr 1. doi: 10.1016/j.jpainsymman.2020.03.026
2. Curtis JR, Kross EK, Stapleton RD. The importance of addressing advance care planning and decisions about do-not-resuscitate orders during novel coronavirus 2019 (COVID-19). *JAMA*. 2020 Mar 27. doi: 10.1017/cem.2020.352
3. Feder S, Akgün KM, Schulman-Green D. Palliative Care Strategies Offer Guidance to Clinicians And Comfort for COVID-19 Patient and Families. *Heart & Lung*. 2020 Apr 4. doi: 10.1016/j.hrtlng.2020.04.00
4. Hendin A, La Rivière CG, Williscroft DM et al. End-of-life care in the Emergency Department for the patient imminently dying of a highly transmissible acute respiratory infection (such as COVID-19). *Canadian Journal of Emergency Medicine*. 2020 Mar 26:1-5.
5. Coronavirus Disease 2019 (COVID-19) Shared Decision-Making Tool. National Hospice and Palliative Care Organization. <https://www.nhpco.org/wp-content/uploads/COVID-19-Shared-Decision-Making-Tool.pdf>. Published March 29th, 2020. Accessed April 19th, 2020.
6. Palliative Care Toolkit for EM Providers—Point of care Interventions: Treating

- Common Distressful Symptoms. American College of Emergency Physicians. <https://www.acep.org/how-we-serve/sections/palliative-medicine/news/april-2015/palliative-care-toolkit-for-em-providers/>. Accessed April 19, 2020.
7. Pocket Card: COVID Symptom Management and Key Communication Phrases. Pocket Card: COVID Symptom Management and Key Communication Phrases | Center to Advance Palliative Care. <https://www.capc.org/documents/784/>. Published April 1, 2020. Accessed April 19, 2020.
 8. Discharge to Home Palliative Care. ACEP COVID-19 Field Guide conversation guide. <https://www.acep.org/corona/covid-19-field-guide/treatment/discharge-to-home-palliative-care/>. Accessed April 19, 2020.
 9. Di Leo, S., Alquati, S., Autelitano, C. et al. Palliative care in the emergency department as seen by providers and users: a qualitative study. *Scand J Trauma Resusc Emerg Med* 27, 88 (2019). doi: 10.1186/s13049-019-0662-y
 10. Grudzen CR, Hwang U, Cohen JA, Fischman M, Morrison RS. Characteristics of emergency department patients who receive a palliative care consultation. *Journal of palliative medicine*. 2012 Apr 1;15(4):396-9. doi: 10.1089/jpm.2011.0376
 11. Cascella M, Rajnik M, Cuomo A, et al. Features, evaluation and treatment coronavirus (COVID-19). InStatPearls [Internet] 2020 Mar 8. StatPearls Publishing.
 12. Goh KJ, Choong MC, Cheong EH, et al. Rapid Progression to Acute Respiratory Distress Syndrome: Review of Current Understanding of Critical Illness from COVID-19 Infection. *Ann Acad Med Singapore*. 2020 Jan 1;49(1):1-9.
 13. Brewster DJ, Chrimes NC, Do TB, et al. Consensus statement: Safe Airway Society principles of airway management and tracheal intubation specific to the COVID-19 adult

- patient group. *Med J Aust.* 2020 Mar 16;16.
14. Navarro KW. Managing COVID-19 infection risks during cardiac arrest treatment. EMSUK Learning. <https://www.emsuklearning.co.uk/managing-covid-19-infection-risks-during-cardiac-arrest-treatment/>. Published April 6, 2020. Accessed April 19, 2020.
 15. Ong SW, Tan YK, Chia PY, et al. Air, surface environmental, and personal protective equipment contamination by severe acute respiratory syndrome coronavirus 2 (SARS-CoV-2) from a symptomatic patient. *Jama.* 2020 Mar 4. doi:10.1001/jama.2020.3227
 16. Modes of transmission of virus causing COVID-19: implications for IPC precaution recommendations. World Health Organization. <https://www.who.int/news-room/commentaries/detail/modes-of-transmission-of-virus-causing-covid-19-implications-for-ipc-precaution-recommendations>. Published March 29, 2020. Accessed April 29, 2020.

Fig 1. COVID-19 Palliative Flow Diagram

*initiate consult even if there is discord between provider and patient/family expectations.

Note: Ethics Committee can be consulted at any of these decision points if provider is uncomfortable with the plan.

Journal Pre-proof

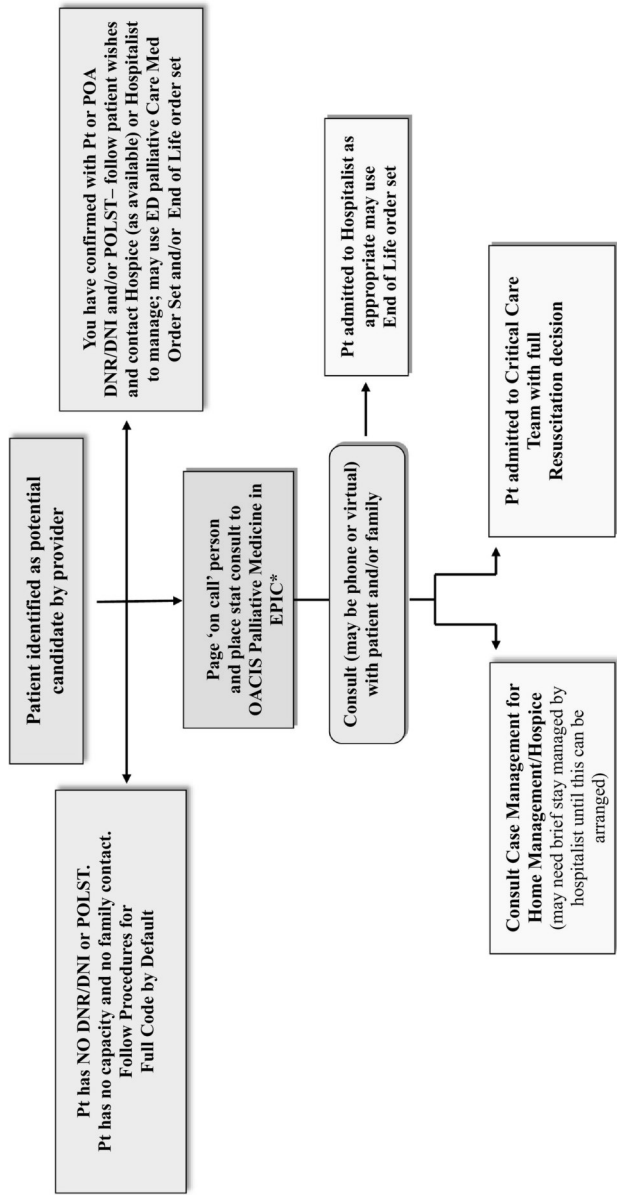


Figure 1