

# Clinical Characteristics and Outcomes in Patients With Coronavirus Disease 2019 and Multiple Sclerosis

Céline Louapre, MD; Nicolas Collongues, MD; Bruno Stankoff, MD; Claire Giannesini, MD; Caroline Papeix, MD; Caroline Bensa, MD; Romain Deschamps, MD; Alain Créange, MD; Abir Wahab, MD; Jean Pelletier, MD; Olivier Heinzlef, MD; Pierre Labauge, MD; Laurent Guilloton, MD; Guido Ahle, MD; Mathilde Goudot, MD; Kevin Bigaut, MD; David-Axel Laplaud, MD; Sandra Vukusic, MD; Catherine Lubetzki, MD; Jérôme De Sèze, MD; for the Covisep investigators

 Supplemental content

**IMPORTANCE** Risk factors associated with the severity of coronavirus disease 2019 (COVID-19) in patients with multiple sclerosis (MS) are unknown. Disease-modifying therapies (DMTs) may modify the risk of developing a severe COVID-19 infection, beside identified risk factors such as age and comorbidities.

**OBJECTIVE** To describe the clinical characteristics and outcomes in patients with MS and COVID-19 and identify factors associated with COVID-19 severity.

**DESIGN, SETTING, AND PARTICIPANTS** The Covisep registry is a multicenter, retrospective, observational cohort study conducted in MS expert centers and general hospitals and with neurologists collaborating with MS expert centers and members of the Société Francophone de la Sclérose en Plaques. The study included patients with MS presenting with a confirmed or highly suspected diagnosis of COVID-19 between March 1, 2020, and May 21, 2020.

**EXPOSURES** COVID-19 diagnosed with a polymerase chain reaction test on a nasopharyngeal swab, thoracic computed tomography, or typical symptoms.

**MAIN OUTCOMES AND MEASURES** The main outcome was COVID-19 severity assessed on a 7-point ordinal scale (ranging from 1 [not hospitalized with no limitations on activities] to 7 [death]) with a cutoff at 3 (hospitalized and not requiring supplemental oxygen). We collected demographics, neurological history, Expanded Disability Severity Scale score (EDSS; ranging from 0 to 10, with cutoffs at 3 and 6), comorbidities, COVID-19 characteristics, and outcomes. Univariate and multivariate logistic regression models were used to estimate the association of collected variables with COVID-19 outcomes.

**RESULTS** A total of 347 patients (mean [SD] age, 44.6 [12.8] years, 249 women; mean [SD] disease duration, 13.5 [10.0] years) were analyzed. Seventy-three patients (21.0%) had a COVID-19 severity score of 3 or more, and 12 patients (3.5%) died of COVID-19. The median EDSS was 2.0 (range, 0-9.5), and 284 patients (81.8%) were receiving DMT. There was a higher proportion of patients with a COVID-19 severity score of 3 or more among patients with no DMT relative to patients receiving DMTs (46.0% vs 15.5%;  $P < .001$ ). Multivariate logistic regression models determined that age (odds ratio per 10 years: 1.9 [95% CI, 1.4-2.5]), EDSS (OR for EDSS  $\geq 6$ , 6.3 [95% CI, 2.8-14.4]), and obesity (OR, 3.0 [95% CI, 1.0-8.7]) were independent risk factors for a COVID-19 severity score of 3 or more (indicating hospitalization or higher severity). The EDSS was associated with the highest variability of COVID-19 severe outcome ( $R^2$ , 0.2), followed by age ( $R^2$ , 0.06) and obesity ( $R^2$ , 0.01).

**CONCLUSIONS AND RELEVANCE** In this registry-based cohort study of patients with MS, age, EDSS, and obesity were independent risk factors for severe COVID-19; there was no association found between DMTs exposure and COVID-19 severity. The identification of these risk factors should provide the rationale for an individual strategy regarding clinical management of patients with MS during the COVID-19 pandemic.

**Author Affiliations:** Author affiliations are listed at the end of this article.

**Group Information:** A complete list of the members of the Covisep investigators appears at the end of this article.

**Corresponding Author:** Céline Louapre, MD, Institut du Cerveau et de la Moelle Épineuse, Assistance Publique des Hôpitaux de Paris, Hôpital de la Pitié Salpêtrière, Sorbonne Université, Institut National de la Santé et de la Recherche Médicale, Clinical Investigation Center Neuroscience Unité Mixte De Recherche S 1127, Centre National de la Recherche Scientifique Unité Mixte De Recherche 7225, F-75013, Paris, France (celine.louapre@aphp.fr).

JAMA Neurol. doi:10.1001/jamaneurol.2020.2581  
Published online June 26, 2020.

In December 2019, the first cases of a new coronavirus infection (coronavirus disease 2019 [COVID-19]) attributable to severe acute respiratory syndrome coronavirus 2 (SARS-CoV-2) appeared in Wuhan, China. The virus has spread rapidly, reaching 225 countries and more than 5 million people as of May 21, 2020. In France, by the same date, 181 000 patients had tested positive for COVID-19 and more than 28 000 patients had died of COVID-19. In the pandemic context, populations at risk of developing severe forms of COVID-19 have begun to be identified.<sup>1</sup>

Patients with multiple sclerosis (MS) represent a population of particular interest in the pandemic context because most of them are treated with immunosuppressants. On March 13, 2020, the Multiple Sclerosis International Federation issued recommendations regarding the risk of COVID-19 in patients with MS, with a specific statement regarding disease-modifying therapies (DMTs), indicating that “some MS medications might increase the likelihood of developing complications from a COVID-19 infection but this risk needs to be balanced with the risks of stopping treatment.”<sup>2</sup> In statements from national MS societies and published editorials,<sup>3,4</sup> it is recommended to consider delaying DMT initiation for those treatments with the highest presumed infectious risk or delaying the completion of a course for sequential DMTs. The attitude toward DMTs in the case of proven COVID-19 infection is to consider temporarily stopping immunosuppressive DMTs. Expert panels have proposed a stratification of the risk of treatments according to known systemic immunosuppression.<sup>3,4</sup>

In this context, we have initiated a French registry enabling the collection of highly suspect and proven COVID-19 in patients with MS. The purpose of this registry was to determine the characteristics of COVID-19 in this population and identify the risk factors for developing a severe form of this infection.

## Methods

### Data Collection

We conducted a multicenter, retrospective, observational cohort study of patients with MS with confirmed or highly suspected COVID-19 diagnosis (Covisep registry). All French MS expert centers (Centre de Ressources et de Compétences-Sclérose en Plaques), part of the French Clinical Research Infrastructure Network for Multiple Sclerosis (which is part of Institut National de la Santé et de la Recherche Médicale), and general hospitals and neurologists collaborating with the Centre de Ressources et de Compétences-Sclérose en Plaques or members of the French MS society (Société Francophone de la Sclérose en Plaques) participated in the collection of data.

The study followed the Strengthening Reporting of Observational Studies in Epidemiology (STROBE) guidelines. The study received approval from the ethics committee of Sorbonne University and is registered at the Institut National des Données de Santé for the use of confidential electronically processed patient data. The study protocol is registered on ClinicalTrials.gov (NCT04355611). Patients included were informed about the objective of the study, and the collection of

## Key Points

**Question** What are the risk factors for developing a severe form of coronavirus disease 2019 (COVID-19) in patients with multiple sclerosis (MS)?

**Findings** In this cohort study of 347 patients with MS, risk factors for severe forms of COVID-19 were neurological disability, age, and obesity, but no association was found between disease-modifying therapies exposure and COVID-19 severity.

**Meaning** The identification of these risk factors could provide a rationale for an individual strategy of clinical management in patients with MS during the COVID-19 pandemic.

nonopposition (consent) to the use of medical data was carried out according to French law, good clinical practice, and the General Data Protection Regulation. Using an electronic clinical record form on RedCap (<https://www.project-redcap.org/>), study data were collected from medical records of patients who were diagnosed with COVID-19 between March 1, 2020, and May 21, 2020.

### Population of Interest

Inclusion criteria were MS and at least 1 of the following 4 criteria: (1) a biologically confirmed COVID-19 diagnosis based on a positive result of a SARS-CoV-2 polymerase chain reaction (PCR) test on a nasopharyngeal swab; (2) typical thoracic computed tomography (CT) abnormalities (ground-glass opacities) in epidemic areas; (3) anosmia or ageusia of sudden onset in the absence of rhinitis or nasal obstruction; or (4) COVID-19-typical symptoms (triad of cough, fever, and asthenia) in an epidemic zone of COVID-19. The noninclusion criterion was the patient's opposition to the use of his or her medical data.

### Definition of Study End Points

We collected patient demographics, current DMT use, Expanded Disability Severity Scale score (EDSS) before COVID-19, and comorbidities and the presence of known lymphopenia before infection. Regarding COVID-19, we collected symptoms and diagnostic data (PCR for SARS-CoV-2 or chest CT). The primary end point was the participant's clinical status at the most severe point of their COVID-19 course (on a 7-point ordinal scale<sup>5</sup>), referred as the *COVID-19 severity score*, where 1 indicated the patient was not hospitalized and had no limitations on activities; 2, the patient was not hospitalized and had limitation on activities; 3, the patient was hospitalized and did not require supplemental oxygen; 4, the patient was hospitalized and required supplemental oxygen; 5, the patient was hospitalized and receiving noninvasive ventilation or high-flow oxygen; 6, the patient was hospitalized and receiving invasive mechanical ventilation or extracorporeal membrane oxygenation; or 7, death.

### Statistical Analysis

Descriptive statistics were performed on demographic and clinical variables. Demographic data were compared between patients with COVID-19 severity scores of 1 or 2 and pa-

tients with COVID-19 severity scores of 3 or more (ie, hospitalization or death from COVID-19). Group comparisons were performed using the Mann-Whitney *U* test for numerical and ordinal variables and the Fisher test or  $\chi^2$  test when appropriate for categorical variables. Any 2-sided  $P < .05$  was considered statistically significant.

Univariate logistic regression models were performed on identified variables to assess their association with COVID-19 outcome (severity scores, 1-2 vs  $\geq 3$ ). Age was treated as a continuous variable, and EDSS was segmented into 3 bins (<3, 3-5.5, and  $\geq 6$ ). Disease-modifying therapies were categorized according to systemic infection risk (no risk: interferon beta and glatiramer; low risk: teriflunomide, dimethylfumarate, natalizumab, and other drugs [mycophenolate mofetil, methotrexate, and cyclophosphamide]; intermediate or high risk: fingolimod, anti-CD20 therapies, cladribine, and alemtuzumab) as proposed in a previous study.<sup>4</sup> Subsequently, a multivariate logistic regression model was performed to determine which variables are independently associated with severe COVID-19 (severity score  $\geq 3$ ). Variable selection was done through backward elimination and forward selection by minimizing Akaike information criterion. Results are expressed as odds ratios (ORs) and 95% CIs. McFadden pseudo- $R^2$  values were calculated for each variable to quantify the proportion of the total variability of the outcome that is accounted for by the model. Data analyses were performed in Python (Python Software Foundation) using Pandas package version 1.0.3, Scipy version 1.4.1, and Statsmodels version 0.11.1.

## Results

### Study Population

As of May 21, 2020, 348 patients with MS were in the Covisep registry. Among 46 patients with a negative SARS-CoV-2 PCR result, 10 patients had a chest CT showing typical lesions for COVID-19 and 1 patient had further SARS-CoV-2-positive serology results. For the remaining patients with negative SARS-CoV-2 PCR results, 34 of 35 were confirmed to have a highly suspicious COVID-19 with a typical medical history. One patient had an uncertain COVID-19 diagnosis and was excluded from the analysis. Ultimately, 347 patients with MS were included.

### Demographics and Clinical Characteristics

Demographics and clinical characteristics of the cohort are presented in the **Table**. Briefly, their mean (SD) age was 44.6 (12.8) years, 249 of 347 were women, and the mean (SD) disease duration was 13.5 (10.0) years.

Seventy-three patients had a COVID-19 severity score of 3 or more. Patients presented with typical symptoms for COVID-19. Notably, fever (temperature more than 38 °C) and dyspnea were more frequent in patients with severe COVID-19 (67 of 73 [91.8%] and 54 of 73 [74.0%], respectively) than patients who were not hospitalized (193 of 274 [70.4%] and 108 of 274 [39.4%] respectively;  $P < .001$ ), while anosmia/ageusia and headache were more common in patients who were not hospitalized (135 of 274 [49.3%] and 164 of 274 [59.8%],

**Table. Demographic and Disease Characteristics of Patients With Multiple Sclerosis Diagnosed With Coronavirus Disease 2019 in the Covisep Registry, as of May 21, 2020**

Characteristic	No. (%)
No. of patients with MS	347
Demographics	
Age, mean (SD), y	44.6 (12.8)
Sex ratio, female:male	249:98
Disease duration, mean (SD), y	13.5 (10.0)
Disease course, No.	
Clinically isolated syndrome	6
Remitting-relapsing multiple sclerosis	276
Secondary progressive multiple sclerosis	48
Primary progressive multiple sclerosis	17
Expanded Disability Severity Score, median (range)	2.0 (0.0-9.5)
Disease-modifying therapies	
Interferon beta	20 (5.8)
Glatiramer	33 (9.5)
Teriflunomide	33 (9.5)
Dimethylfumarate	35 (10.1)
Natalizumab	57 (16.4)
Fingolimod	42 (12.1)
Ocrelizumab	38 (11.0)
Rituximab	17 (4.9)
Cladribine	3 (0.9)
Alemtuzumab	1 (0.3)
Other <sup>a</sup>	5 (1.4)
None	63 (18.2)
Lymphopenia before COVID-19 onset, No./No. tested (%)	
No lymphopenia	128/187 (68.4)
Lymphopenia	59/187 (31.6)
Lymphopenia, excluding patients receiving fingolimod	34/157 (21.6)
Lymphopenia grade, No.	
1	10
2	21
3	23
4	2
Comorbid conditions	
Cardiovascular disease	23 (6.6)
Pulmonary disease	15 (4.3)
Diabetes	16 (4.6)
Obesity (BMI>30)	24 (6.9)
Smoking	33 (9.5)
COVID-19 diagnosis, No./No. tested (%)	
Positive SARS-CoV-2 polymerase chain reaction result	146/191 (76.4)
Ground-glass opacity on thoracic computed tomography scan	62/93 (66.7)
COVID-19 symptoms	
Asthenia	290 (83.6)
Fever	260 (74.9)
Cough	266 (76.7)
Anosmia/ageusia	150 (43.2)
Headache	180 (51.9)
Dyspnea	162 (46.7)
Digestive disorders	88 (25.4)
Dizziness	54 (15.6)

(continued)

**Table. Demographic and Disease Characteristics of Patients With Multiple Sclerosis Diagnosed With Coronavirus Disease 2019 in the Covisep Registry, as of May 21, 2020 (continued)**

Characteristic	No. (%)
Inclusion criteria	
Positive SARS-CoV-2 polymerase chain reaction	146 (42.1)
Ground-glass opacity on thoracic computed tomography scan, without fulfilling above criteria	18 (5.2)
Anosmia/ageusia, without fulfilling above criteria	91 (26.2)
Typical COVID-19 symptoms, without fulfilling above criteria	92 (26.5)

Abbreviations: BMI, body mass index (calculated as weight in kilograms divided by height in meters squared); COVID-19, coronavirus disease 2019; SARS-CoV-2, severe acute respiratory syndrome coronavirus 2.

<sup>a</sup> Other treatments for patients with multiple sclerosis: mycophenolate mofetil (n = 3), cyclophosphamide (n = 1), and methotrexate (n = 1).

respectively) vs patients who were hospitalized (15 of 73 [20.5%] and 16 of 73 [21.9%], respectively;  $P < .001$ ).

The distribution of clinical severity for COVID-19 according to the different DMTs is presented in **Figure 1**. The ages and EDSSs of patients in each DMT group are shown in eFigure 1 in the **Supplement**.

### Variables Associated With COVID-19 Severity

Patients with COVID-19 severity scores of 3 or more were more frequently male compared with patients with COVID-19 who were not hospitalized (female:male sex ratio: 1.4 vs 3.0;  $P = .008$ ). Age and EDSS differences between groups and clinical course distribution are represented in **Figure 2**. Patients with COVID-19 severity scores of 3 or more were older (mean [SD] age, 55.0 [13.7] years vs 41.9 [11.0] years;  $P < .001$ ), had higher EDSS (median EDSS, 6.0 vs 2.0;  $P < .001$ ), and more frequently had a progressive course (36 of 73 [49.3%] vs 29 of 274 [10.6%];  $P < .001$ ) compared with patients with COVID-19 who were not hospitalized.

The presence of at least 1 comorbidity was associated with an increased risk of severe COVID-19. The proportion of patients with at least 1 comorbidity was lower in the nonhospitalized group vs the severe COVID-19 group (75 of 274 [27.4%] vs 38 of 73 [52.1%], respectively;  $P < .001$ ). Comorbidities associated with a COVID-19 severity score of 3 or more were diabetes (9 of 73 [12.3%] vs 7 of 274 [2.5%];  $P = .002$ ), cardiovascular comorbidity (13 of 73 [17.8%] vs 10 of 274 [3.6%];  $P < .001$ ), pulmonary comorbidity (7 of 73 [9.6%] vs 8 of 274 [2.9%];  $P = .02$ ), and obesity (10 of 73 [13.7%] vs 14 of 274 [5.1%];  $P = .02$ ).

There was a higher proportion of patients with severe COVID-19 among patients with no DMTs relative to patients who were receiving DMTs (29 of 63 [46.0%] vs 44 of 284 [15.5%];  $P < .001$ ). Among patients with DMTs (n = 284), there was a difference in COVID-19 outcome between DMT groups, with a higher proportion of patients with severe COVID-19 in the moderate-risk or high-risk DMT group (24 of 101 [23.8%] vs 17 of 130 [13.1%] in the low-risk DMT group and 3 of 53 [5.7%] in the no-risk DMT group;  $P = .007$ ). Disease-modifying treatments were stopped or postponed (in the case of sequential treatment) in 77 patients (27.1%), but DMT modification was not associated with COVID-19 outcome.

Among 187 patients for whom lymphocyte counts were available before COVID-19 onset, we did not find an association between lymphopenia and severe COVID-19. However, if we excluded patients taking fingolimod because of this drug's mechanism of action, lymphopenia was more frequent in patients with COVID-19 severity scores of 3 or more (22 of 57 [38.6%] vs 12 of 100 [12.0%];  $P < .001$ ).

### Univariate and Multivariate Logistic Regression Models of Severe COVID-19

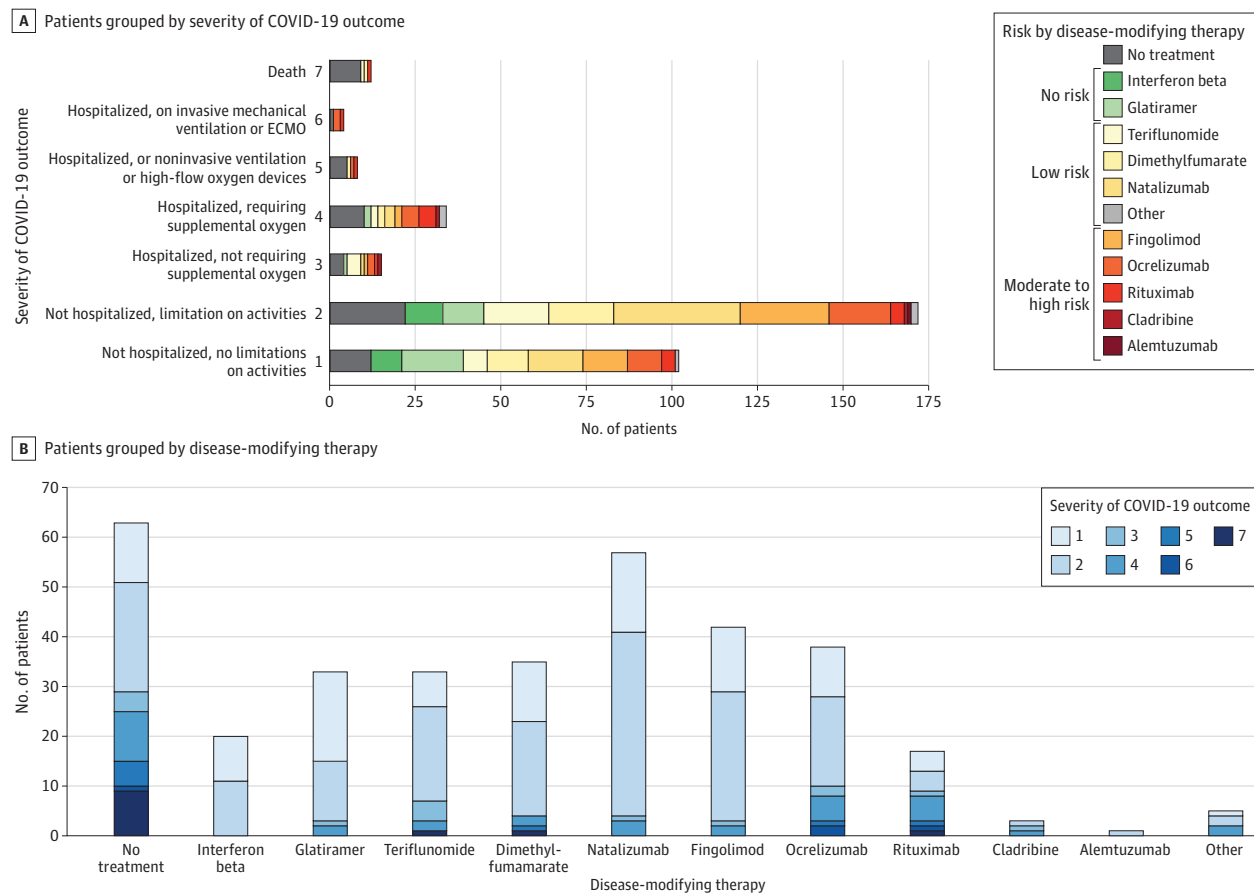
To estimate the risk factors associated with COVID-19 severity scores of 3 or more, we calculated the odds ratios (ORs) from univariate logistic regression models (**Figure 3A**). Greater age (OR per 10 years, 2.49 [95% CI, 1.92-3.22]), male sex (OR, 2.11 [95% CI, 1.23-3.63]), comorbidities (OR, 2.93 [95% CI, 1.73-4.99]), progressive disease (OR, 8.22 [95% CI, 4.52-14.96]), and higher EDSS (ORs, EDSS 3-5.5, 6.28 [95% CI, 2.97-13.26]; EDSS  $\geq 6$ , 16.10 [95% CI, 7.72-33.58]) were associated with increased risk of severe COVID-19, while DMTs were associated with lower risks of severe COVID-19 (interferon or glatiramer acetate: OR, 0.07 [95% CI, 0.02-0.25]; teriflunomide, dimethylfumarate, natalizumab, or other drugs: OR, 0.18 [95% CI, 0.09-0.36]; alemtuzumab, cladribine, fingolimod, ocrelizumab, or rituximab: OR, 0.37 [95% CI, 0.19-0.72]). In the multivariate logistic regression model, age, male, obesity, cardiac comorbidity, and EDSS were retained in the model as independent variables associated with severe COVID-19 (**Figure 3B**). Among these, higher age (OR per 10 years, 1.9 [95% CI, 1.4-2.5]), an EDSS of 6 or more (OR, 6.3 [95% CI, 2.8-14.4]), and obesity (OR, 3.0 [95% CI, 1.03-8.7]) were independent variables associated with severe COVID-19 (severity score  $\geq 3$ ). The EDSS showed the highest variability of COVID-19 severe outcome ( $R^2$ , 0.20), followed by age (additional  $R^2$ , 0.06) and obesity (additional  $R^2$ , 0.01) (**Figure 3C**).

A cutoff score of 7 for EDSS provided similar results (eFigure 2 in the **Supplement**). As a sensitivity analysis, when including only patients with positive SARS-CoV-2 PCR results (n = 146), a higher age (OR per 10 years, 1.6 [95% CI, 1.1-2.3]) and an EDSS of 6 or more (OR, 7.0 [95% CI, 2.3-21.2]) remained independent variables associated with severe COVID-19.

We performed a post hoc analysis with a threshold of 4 for COVID-19 severity score (hospitalized, requiring supplemental oxygen, or higher severity). We obtained similar results at univariate analysis (eFigure 3 in the **Supplement**). In the multivariate logistic regression model, age, male sex, obesity, cardiac comorbidity, and EDSSs were retained as independent variables associated with severe COVID-19 (eFigure 3 in the **Supplement**). A higher age (OR per 10 years, 2.1 [95% CI, 1.5-3.0]), EDSS of 6 or more (OR, 8.3 [95% CI, 3.1-22.3]), male sex (OR, 2.6 [95% CI, 1.2-5.3]), and obesity (OR, 5.2 [95% CI, 1.6-16.5]) were the independent variables associated with severe COVID-19 (severity score  $\geq 4$ ). The EDSS showed the highest variability of COVID-19 severe outcome ( $R^2$ , 0.23), followed by age (additional  $R^2$ , 0.08), obesity ( $R^2$ , 0.02), and male sex ( $R^2$ , 0.01) (eFigure 3 in the **Supplement**).



Figure 1. Clinical Condition Rating at Nadir and Disease-Modifying Therapies in Patients With Multiple Sclerosis



A, Patients were grouped according to coronavirus disease 2019 (COVID-19) severity score (from 1 [not hospitalized with no limitations on activities] to 7 [death]). B, Patients were grouped according to disease-modifying therapy.

Systemic immunosuppression risk was adapted from Brownlee et al.<sup>3</sup> Other treatments used by patients with multiple sclerosis included mycophenolate mofetil (n = 3), cyclophosphamide (n = 1), and methotrexate (n = 1).

### Clinical Description of Patients With Highest COVID-19 Severity

Twelve patients in the cohort (3.5%) died of COVID-19, with most of these patients having a progressive form of the disease and a high EDSS. Four patients were hospitalized in intensive care units. One relatively young patient was in intensive care under mechanical ventilation for 3 weeks and is now in rehabilitation with a tracheotomy. Another patient was admitted to an intensive care unit 10 days after symptom onset. Both patients were receiving ocrelizumab and had obesity as a comorbidity. A third patient with primary progressive MS was in intensive care under mechanical ventilation for 8 days and has since been discharged from the hospital. This person was taking rituximab, had an EDSS of 5.5, and had no known comorbidities. A fourth patient, who had relapsing-remitting MS with no DMT, was admitted in intensive care under mechanical ventilation.

Figure 4 displays an associative plot between age, EDSS, and COVID-19 severity of individuals from the cohort. A description of demographics and clinical characteristics of patients with the most severe COVID-19 outcome (score 6: un-

der mechanical ventilation; score 7: death) is provided in eTable 1 in the Supplement.

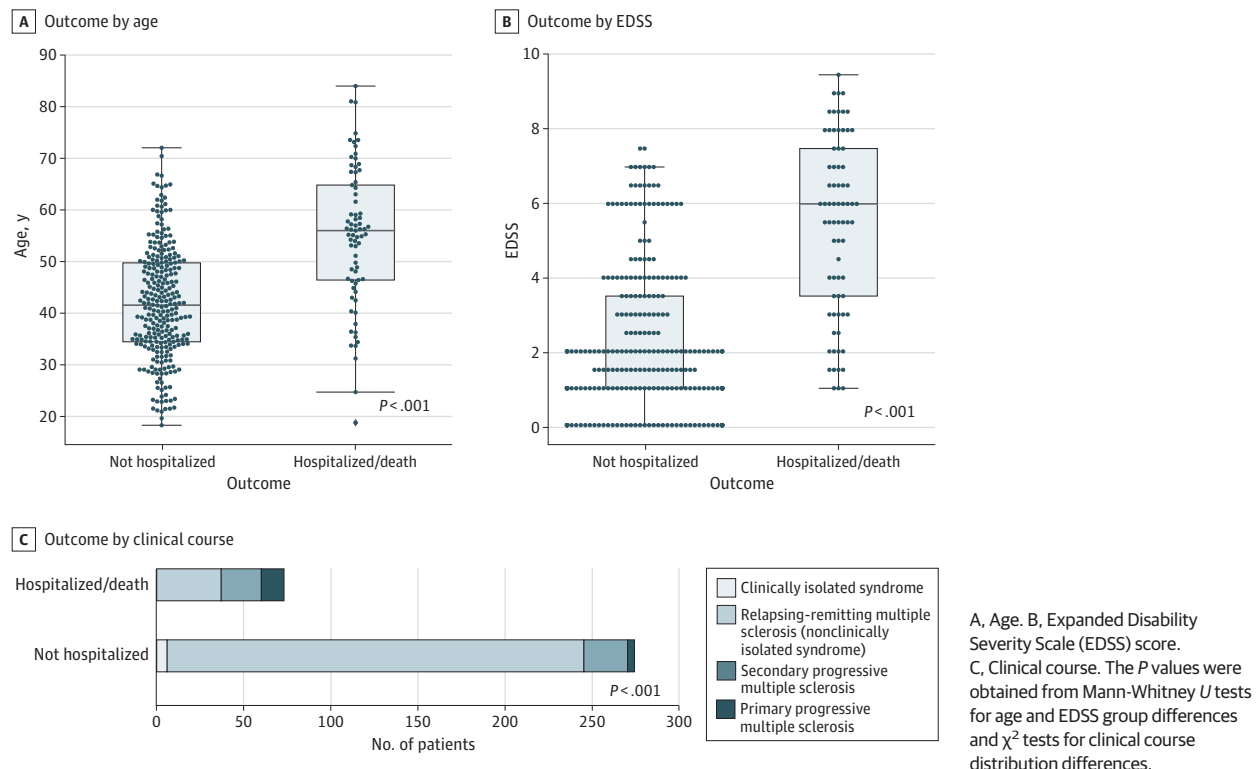
### Fatality Rate in Patients With Multiple Sclerosis Hospitalized for COVID-19

We provide in eTable 2 in the Supplement the numbers of patients, stratified by age and sex, and the death rate among patients who were hospitalized. As a reference, we have included the death rate among patients hospitalized for COVID-19 in the overall population in France.<sup>6</sup> Although no statistical analysis can be performed because of the low number of patients who died in this cohort, we observed a higher fatality rate among patients who were hospitalized for most age groups in patients with MS compared with reference estimates.

### Discussion

We found COVID-19 symptom profiles to be consistent with that described in the general population. In this cohort, fever and dyspnea were more common in patients hospitalized for

**Figure 2. Characteristics of Patients Not Hospitalized for Coronavirus Disease 2019 (COVID-19) and Patients Who Were Hospitalized With or Died of COVID-19**



COVID-19. Similarly, in a series of 201 patients with COVID-19 pneumonia, high fever was associated with the development of acute respiratory distress syndrome.<sup>7</sup> Headache and anosmia were more frequently associated with ambulatory forms in our cohort, in line with a recent article<sup>8</sup> reporting that anosmia was strongly and independently associated with outpatient care.

Importantly, we identified in univariate analyses risk factors for COVID-19 severity: age, EDSS, progressive course of MS, and male sex. Comorbidities were also identified as risk factors, including cardiovascular and pulmonary diseases, diabetes, and obesity. These comorbidities were most frequently found in a large series of patients hospitalized in an intensive care unit for COVID-19 in New York, New York.<sup>9</sup>

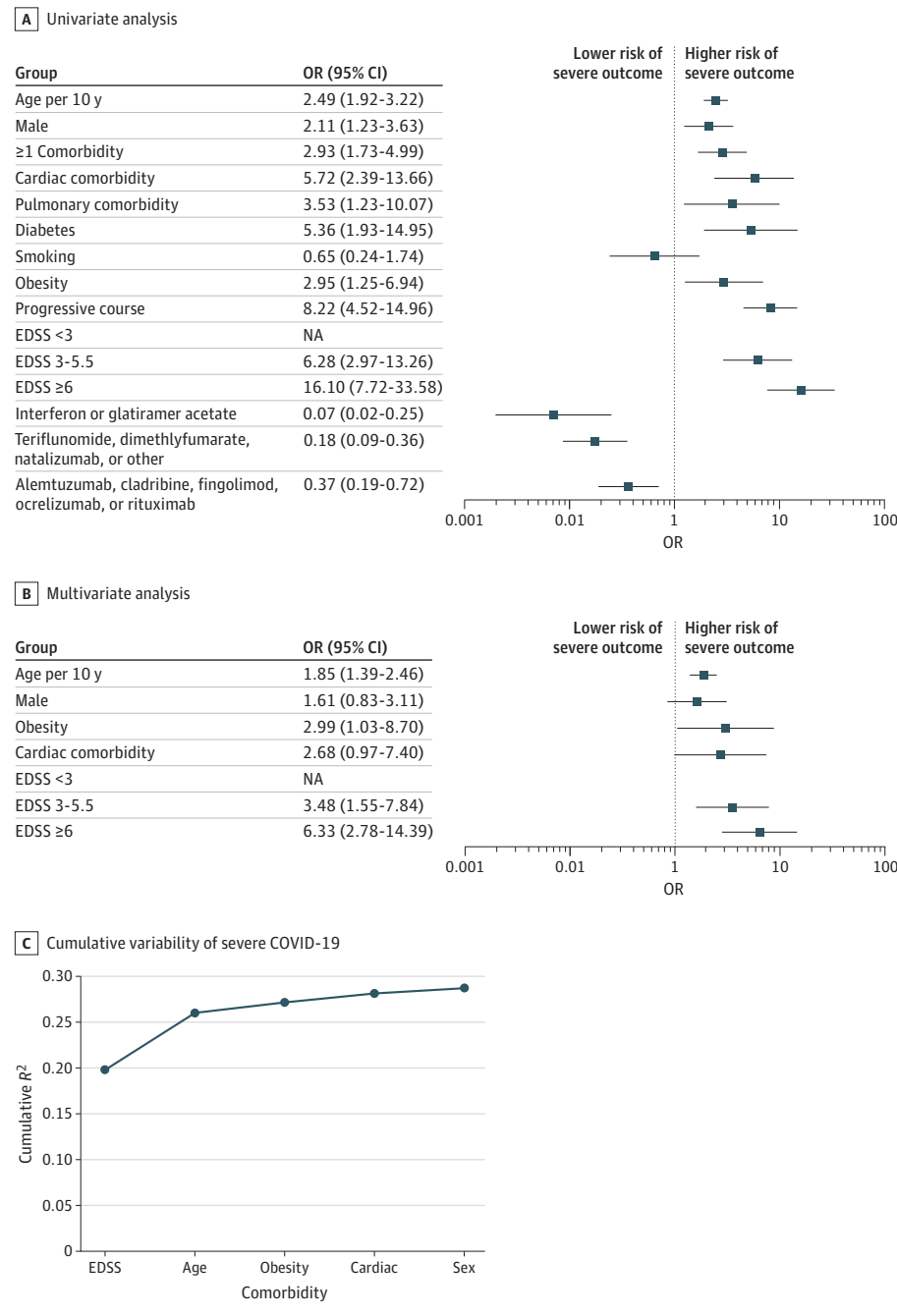
The presence of DMT was associated with a lower risk of hospitalization in univariate analysis. Among patients who were hospitalized or died, there was an increased proportion of patients without treatment compared with the patients who were not hospitalized. Given the interactions between age, disease course, EDSS, and exposure to DMTs, it is crucial to carry out a multivariate analysis to estimate the independent outcome of each of these variables. Indeed, DMTs are more frequently prescribed in younger patients, those with a relapsing form of MS, and those with a lower level of disability. In multivariate analyses, only the following variables were independent risk factors of severe form of COVID-19: age, EDSS, and obesity. Additionally, the multivariate analysis carried out with a threshold of severity of COVID-19 of 4 or more found an

independent outcome of male sex as risk factor for severe COVID-19, beside age, obesity, and EDSS.

In this cohort, the exposure to DMTs and the level of immunosuppression were not factors that independently modified the risk of developing a severe form of COVID-19. Caution should be exercised when interpreting this result, because it is possible that a larger cohort could identify a subgroup of patients with 1 or more DMTs that modify the risk of COVID-19. Therefore, the pooling of registries and/or replication of results in other cohorts from several countries will be important to reinforce this result. In our population, 2 patients with relapsing-remitting MS who were receiving ocrelizumab have developed acute respiratory distress syndrome. Although these 2 patients also had obesity, it cannot be excluded that their DMTs may have increased their susceptibility to COVID-19 severity. In the literature, cases of patients with MS and COVID-19 who were receiving ocrelizumab were reported, with 1 being asymptomatic<sup>10</sup> and the other having a favorable outcome.<sup>11</sup> Serological studies following COVID-19 infection in these patients will be crucial to determine the characteristics of the immune response to COVID-19, depending on the different DMTs and in particular on anti-CD20 therapies, for which lower immune response to vaccination has been reported.<sup>12</sup>

It is not surprising to identify age and obesity as independent risk factors for COVID-19 severity. Age was identified in the earliest published study<sup>13</sup> as a major risk factor for the severity of COVID-19 infection. More recently, obesity has also been identified as an independent risk factor.<sup>14</sup>

Figure 3. Risk Factors of Severe Coronavirus Disease 2019 (COVID-19)



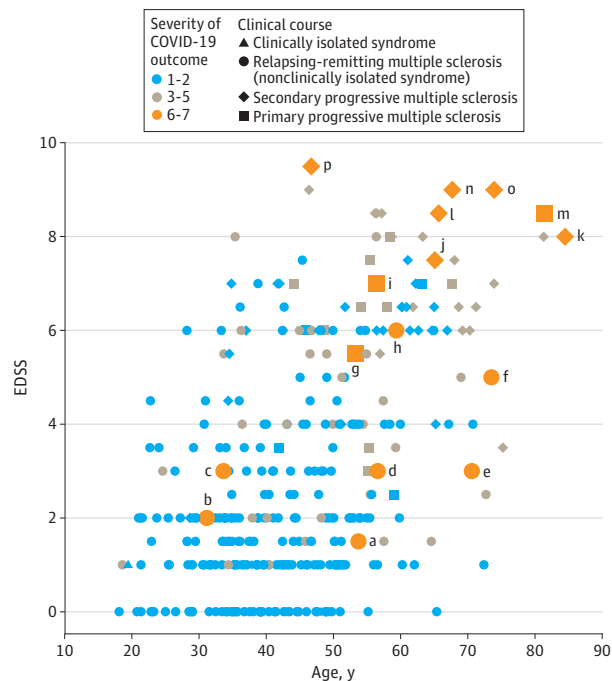
Severe COVID-19 was defined as a severity score of 3 or more. A, Univariate analysis. B, Multivariate analysis. Results are expressed as odds ratios (ORs) with 95% CIs. C, Cumulative variability (McFadden  $R^2$ ) of severe COVID-19 accounted for each variable retained in the multiple logistic regression model. Numbers of patients per category: men, 98; with 1 or more comorbidity, 113; with obesity, 24; with cardiac comorbidity, 23; with an Expanded Disability Severity Status (EDSS) score less than 3, 194; with an EDSS of 3 to 5.5, 75; with an EDSS of 6 or more, 69; without disease-modifying therapy, 63; receiving interferon or glatiramer acetate, 53; receiving teriflunomide, dimethylfumarate, natalizumab, or other drugs, 130; and receiving fingolimod, ocrelizumab, rituximab, cladribine, or alemtuzumab, 101. NA indicates not applicable.

The association between COVID-19 severity and the level of neurological disability assessed by EDSS in this cohort has not been previously reported, because there are (to our knowledge) currently no data available on the severity of COVID-19 in patients with preexisting neurological disabilities. Respiratory dysfunction is common in patients with MS and EDSS of 7 or more and is linked to expiratory muscles and cough impairment.<sup>15</sup> With the EDSS being the independent variable with the highest explained variability on COVID-19 severity, this finding should lead to strengthening and sustaining pre-

cautions and barrier measures to limit the risk of COVID-19 infection in patients with high disability.

The overall mortality rate of COVID-19 in the cohort was 3.5%. The case-fatality ratio was estimated at 0.44% in mainland China in the age group of 40 to 49 years.<sup>16</sup> A recent study estimated the infection fatality ratio in France as 0.7% (95% CI, 0.4%-1.0%), including asymptomatic cases.<sup>6</sup> In our cohort, only 2 patients without symptoms were diagnosed as positive for SARS-CoV-2 by PCR swab, and most cases were reported because of typical symptoms for COVID-19. There-

**Figure 4. Plot Associating Expanded Disability Severity Scale (EDSS) Score, Age, and Coronavirus Disease 2019 (COVID-19) Severity Score**



Letters *a* to *p* refer to case reports of patients in need of mechanical ventilation or extracorporeal membrane oxygenation, or dead of COVID-19, as detailed in eTable 1 in the Supplement.

fore, we cannot infer an infection fatality ratio from this cohort. Instead, the fatality rate among patients who were hospitalized is a relevant measure at this stage of the outbreak. The fatality rate among patients who were hospitalized was higher for most age groups in patients with MS compared with the general population in France, suggesting an increased risk of death in patients with MS compared with the general population, which needs to be confirmed with large epidemiological studies.

Few data are available on the risk of COVID-19 in other autoimmune diseases in which patients are frequently treated by immunosuppressants. The preliminary results of the Global Rheumatology Alliance registry show a hospitalization rate of 35% (vs 21% in our population) and a death rate of 5% (vs 3.5% in our cohort) in 110 patients with various autoimmune pathologies.<sup>17</sup> The identification of risk factors associated with COVID-19 severity in this population will be particularly relevant compared with our cohort.

### Limitations

Limitations may include a potential referral bias toward severe COVID-19 or patients receiving DMTs who may have been more concerned about COVID-19 symptoms than patients who are untreated. It is also important to note that some immunosuppressive treatments, notably cladribine and alemtuzumab, are not commonly used in France, so it is not possible to analyze specifically whether these treatments could increase the risk associated with COVID-19.

### Conclusions

COVID-19 has significantly changed medical practice for several weeks, and it is likely to remain an issue for months. In patients with MS, we identified disability, age, and obesity as the main risk factors for COVID-19 severity. Our data do not support an increased risk of severe outcome associated with DMTs, which should reinforce the recommendation of not stopping current DMTs and not delaying treatment initiation in patients who have higher disease inflammatory activity, risk for relapses, or subsequent disability. Conversely, patients with high EDSS and older age are at highest risk of severe COVID-19. Given the importance of these 2 variables on COVID-19 outcomes, the identification of a potential outcome of certain DMTs on COVID-19 risk would require a large international effort to collect data and a specific focus on patients with less advanced disease that also considers known comorbidities for COVID-19.

### ARTICLE INFORMATION

**Accepted for Publication:** May 28, 2020.

**Published Online:** June 26, 2020.

doi:10.1001/jama.neuro.2020.2581

**Author Affiliations:** Institut du Cerveau et de la Moelle Épineuse, Assistance Publique des Hôpitaux de Paris, Hôpital de la Pitié Salpêtrière, Sorbonne Université, Institut National de la Santé et de la Recherche Médicale, Centre National de la Recherche Scientifique, Clinical Investigation Center Neuroscience, Paris, France (Louapre, Stankoff, Papeix, Lubetzki); Service de Neurologie, Clinical Investigation Center Institut National de la Santé et de la Recherche Médicale 1434, Centre Hospitalier Universitaire de Strasbourg, Strasbourg, France (Collongues, Bigaut, De Seze); Hôpital St Antoine, Assistance Publique des Hôpitaux de Paris, Paris, France (Stankoff, Giannesini); Département de Neurologie, Hôpital Fondation Adolphe de Rothschild, Paris, France (Bensa, Deschamps); Service de Neurologie, Centre de Ressources et de

Compétences-Sclérose en Plaques, Assistance Publique des Hôpitaux de Paris, Groupe Hospitalier Henri Mondor, Université Paris-Est Créteil, Créteil, France (Créange, Wahab); Service de Neurologie, Pôle de Neurosciences Cliniques, Assistance Publique-Hôpitaux de Marseille, Hôpital de la Timone, Aix Marseille Université, Marseille, France (Pelletier); Département de Neurologie, Centre Hospitalier de Poissy, St Germain, France (Heinzleff); Département de Neurologie, Centre Hospitalier Universitaire de Montpellier, Montpellier, France (Labauge); Association des Neurologues Libéraux de Langue Française, Bergerac, France (Guilloton); Département de Neurologie, Hôpitaux Civils de Colmar, Colmar, France (Ahle); Service de Neurologie, Groupe Hospitalier de la Région de Mulhouse, Mulhouse, France (Goudot); Centre de Recherche en Transplantation et Immunologie-Institut National de la Santé et de la Recherche Médicale U1064, Service Neurologie, Clinical Investigation Center 1413, Centre Hospitalier Universitaire Nantes, Nantes, France (Laplaud);

Hôpital Neurologique Pierre Wertheimer, Hospices Civils de Lyon, Lyon/Bron, France (Vukusic).

**Author Contributions:** Dr Louapre had full access to all of the data in the study and takes responsibility for the integrity of the data and the accuracy of the data analysis.

**Concept and design:** Collongues, Papeix, Pelletier, Vukusic, de Seze.

**Acquisition, analysis, or interpretation of data:** All authors.

**Drafting of the manuscript:** Louapre, Collongues, Pelletier, Labauge, Vukusic, de Seze.

**Critical revision of the manuscript for important intellectual content:** Collongues, Stankoff, Giannesini, Papeix, Bensa, Deschamps, Créange, Wahab, Pelletier, Heinzleff, Guilloton, Ahle, Goudot, Bigaut, Laplaud, Vukusic, Lubetzki, de Seze.

**Statistical analysis:** Louapre.

**Administrative, technical, or material support:**

Créange, Wahab, Labauge, Ahle, Laplaud, Vukusic.

**Supervision:** Collongues, Stankoff, Pelletier,



Heinzlef, Guilloton, Ahle, Vukusic, Lubetzki, de Seze.

**Conflict of Interest Disclosures:** Dr Louapre has received consulting or travel fees from Biogen, Novartis, Roche, Sanofi, Teva and Merck Serono, outside the submitted work. Dr Collongues serves on scientific advisory boards for and has received honoraria from Biogen Idec, Merck Serono, Sanofi-Genzyme, Bayer Schering Pharma and Alexion Pharmaceutical, and personal fees and nonfinancial support from Roche, Biogen, Novartis, Sanofi, and MedDay outside the submitted work outside the submitted work. Dr Stankoff has received fees for advisory boards and lectures from Genzyme, Novartis, Teva, and Biogen and research support from Roche, Sanofi-Genzyme, and Merck-Serono outside the submitted work. Dr Papeix has received consulting and lecturing fees and travel grants from Biogen, Genzyme, Novartis, Merck, Roche, Sanofi, and Teva Pharma outside the submitted work. Dr Bensa has received consulting fees for advisory boards from Biogen, Novartis, Roche, and Sanofi Genzyme outside the submitted work. Dr Deschamps has received travel grants from Biogen outside the submitted work. Dr Créange has received departmental research grants from Biogen, GeNeuro, MedDay, Novartis, Octapharma, and Roche; completed expert testimony with Biogen, Novartis, GeNeuro, and Roche; and received grants and personal fees from MedDay outside the submitted work. Dr Wahab has received expert testimony fees from Sanofi-Genzyme and Roche and travel grants from Biogen and Roche outside the submitted work. Dr Pelletier has received consulting or travel fees from Biogen, Novartis, Roche, Sanofi, Teva, MedDay, and Merck Serono outside the submitted work. Dr Heinzlef has received consulting or travel fees from Biogen, Novartis, Roche, Sanofi, Teva, Merck Serono, and MedDay outside the submitted work. Dr Guilloton has received consulting or travel fees from Biogen, Merck Serono, Novartis, Sanofi, and Teva outside the submitted work. Dr Ahle has received consulting or travel fees from AbbVie, Biogen, Novartis, Roche, and Sanofi outside the submitted work and reported grants from Roche, Novartis, Biogen, and Sanofi during the conduct of the study. Dr Bigaut has received travel grants from Biogen Idec and Sanofi-Genzyme outside the submitted work. Dr Laplaud has received grants from the ARSEP Foundation and MedDay; personal fees from Biogen, Sanofi-Genzyme, Merck, Celgene, Roche, MedDay, and Teva; grants and personal fees from Novartis; and consulting and lecturing fees, travel grants, and unconditional research support from Biogen, Genzyme, Novartis, Merck Serono, Roche, Sanofi-Aventis, and Teva Pharma outside the submitted work. Dr Vukusic has received grants, personal fees and nonfinancial support from Biogen, Merck, Novartis, Sanofi-Genzyme, Roche, Teva, Celgene, and MedDay and grants from Novartis, Roche, Sanofi, and Teva outside the submitted work. Dr Lubetzki reports grants and personal fees from Biogen and personal fees from Merck-Serono, Roche, Rewind, and Ipsen outside the submitted work. Dr De Sèze has received consulting fees from Biogen, Roche, Novartis, Teva, Cellgen, Jansen, and Sanofi-Genzyme and contracted research from Novartis and Sanofi-Genzyme outside the submitted work.

**Funding/Support:** This study did not receive specific funding. The French Clinical Research

Infrastructure Network for Multiple Sclerosis is supported by a grant provided by the French State and handled by the Agence Nationale de la Recherche, within the framework of the Investments for the Future program, and support from the Fondation d'Aide pour la Recherche sur la Sclérose en Plaques (ARSEP). Paris Brain Institute Clinical Research Infrastructure Network is supported by a grant provided by the French State and handled by the Agence Nationale de la Recherche, within the framework of the Institut Hospitalo-Universitaire program. The Observatoire Français de la Sclérose en Plaques is supported by a grant provided by the French State and handled by the Agence Nationale de la Recherche, within the framework of the Investments for the Future program (ANR-10-COHO-002), the Eugène Devic EDMUS Foundation Against Multiple Sclerosis, and the ARSEP Foundation.

**Role of the Funder/Sponsor:** The funders had no role in the design and conduct of the study; collection, management, analysis, and interpretation of the data; preparation, review, or approval of the manuscript; and decision to submit the manuscript for publication.

**Group Information:** Coviseq Investigators: Fayçal Derouiche, MD, Mulhouse Neurological Office, Mulhouse, France; Ayman Tourbah, MD, Assistance Publique des Hôpitaux de Paris, Hôpital Raymond Poincaré, Garches, France; Guillaume Matthey, MD, Nancy University Hospital, Nancy, France; Marie Théaudin, MD, Lausanne University Hospital and University of Lausanne, Lausanne, Switzerland; François Sellal, MD, Colmar Hospital, Colmar, France; Marie-Hélène Dugay, MD, Colmar Hospital, Colmar, France; Helene Zéphir, MD, Lille University Hospital, Lille, France; Patrick Vermersch, MD, Lille University Hospital, Lille, France; Françoise Durand-Dubief, MD, Lyon University Hospital, Lyon, France; Romain Marignier, MD, Lyon University Hospital, Lyon, France; Géraldine Androdiass-Condémine, MD, Lyon University Hospital, Lyon, France; Julie Pique, MD, Lyon University Hospital, Lyon, France; Pékès Codjia, MD, Lyon University Hospital, Lyon, France; Caroline Tilikete, MD, Lyon University Hospital, Lyon, France; Véronique Marcaud, MD, Paris Saint-Joseph Hospital, Paris, France; Christine Lebrun-Frenay, MD, Nice University Hospital, Nice, France; Mikael Cohen, MD, Nice University Hospital, Nice, France; Aurelian Ungureanu, MD, Assistance Publique des Hôpitaux de Paris, Saint-Antoine Hospital, Paris, France; Elisabeth Maillart, MD, Assistance Publique des Hôpitaux de Paris, Pitié-Salpêtrière Hospital, Paris, France; Ysoline Beigneux, MD, Assistance Publique des Hôpitaux de Paris, Pitié-Salpêtrière Hospital, Paris, France; Thomas Roux, MD, Assistance Publique des Hôpitaux de Paris, Pitié-Salpêtrière Hospital, Paris, France; Jean-Christophe Corvol, MD, Assistance Publique des Hôpitaux de Paris, Pitié-Salpêtrière Hospital, Paris Brain Institute, Paris, France; Amandine Bordet, MSc, Assistance Publique des Hôpitaux de Paris, Pitié-Salpêtrière Hospital, Paris Brain Institute, Paris, France; Yanica Mathieu, PhD, French Clinical Research Infrastructure Network for Multiple Sclerosis, Paris Brain Institute, Assistance Publique des Hôpitaux de Paris, Paris, France; Frédérique Le Breton, MD, Assistance Publique des Hôpitaux de Paris, Tenon Hospital, Paris, France; Dalia Dimitri Boulou, MD, Assistance Publique des Hôpitaux de Paris, Bicêtre Hospital, Kremlin-Bicêtre, France; Olivier Gout, MD,

Fondation Ophtalmologique Adolphe de Rothschild, Paris, France; Antoine Guéguen, MD, Fondation Ophtalmologique Adolphe de Rothschild, Paris, France; Antoine Moulignier, MD, Fondation Ophtalmologique Adolphe de Rothschild, Paris, France; Marine Boudot, MD, Fondation Ophtalmologique Adolphe de Rothschild, Paris, France; Audrey Chardain, MD, Vincennes Neurological Office, Vincennes, France; Sarah Coulette, MD, Fondation Ophtalmologique Adolphe de Rothschild, Paris, France; Eric Manchon, MD, Gonesse Hospital, Gonesse, France; Samar S. Ayache, MD, Assistance Publique des Hôpitaux de Paris, Henri Mondor Hospital, Créteil, France; Thibault Moreau, MD, Dijon University Hospital, Dijon, France; Pierre-Yves Garcia, MD, Compiègne Noyon Hospital, Compiègne, France; Deiva Kumaran, MD Assistance Publique des Hôpitaux de Paris, Bicêtre Hospital, Kremlin Bicêtre, France; Giovanni Castelnuovo, MD, Nîmes University Hospital, Nîmes, France; Eric Thouvenot, MD, Nîmes University Hospital, Nîmes, France; Frederic Taithe, MD, Clermont-Ferrand University Hospital, Clermont-Ferrand, France; Julien Poupard, MD, Groupe Hospitalier Institut Catholique de Lille, Lille, France; Arnaud Kwiatkowski, MD, Groupe Hospitalier Institut Catholique de Lille, Lille, France; Gilles Defer, MD, Caen University Hospital, Caen, France; Nathalie Derache, MD, Caen University Hospital, Caen, France; Damien Biotti, MD, Toulouse University Hospital, Toulouse, France; Jonathan Ciron, MD, Toulouse University Hospital, Toulouse, France; Christine Clerc, MD, Montbeliard Neurological office, Montbeliard, France; Mathieu Vaillant, MD, Grenoble University Hospital, Grenoble, France; Laurent Magy, MD, Limoges University Hospital, Limoges, France; Alexis Montcuquet, MD, Limoges University Hospital, Limoges, France; Philippe Kerschen, MD, Luxembourg Hospital, Luxembourg City, Luxembourg; Marc Coustans, MD, Quimper Hospital, Quimper, France; Anne-Marie Guennoc, MD, Tours University Hospital, Tours, France; Bruno Brochet, MD, Bordeaux University Hospital, Bordeaux, France; Jean-Christophe Ouallet, MD, Bordeaux University Hospital, Bordeaux, France; Aurélie Ruet, MD, Bordeaux University Hospital, Bordeaux, France; Cécile Dulau, MD, Bordeaux University Hospital, Bordeaux, France; Sandrine Wiertelwski, MD, Nantes University Hospital, Nantes, France; Eric Berger, MD, Besançon Hospital, Besançon, France; Dan Buch, MD, Assistance Publique des Hôpitaux de Paris, Lariboisière Hospital, Paris, France; Bertrand Bourre, MD, Rouen University Hospital, Rouen, France; Maud Pallix-Guiot, MD, Orleans Hospital, Orleans, France; Aude Maurousset, MD, Tours University Hospital, Tours, France; Bertrand Audoin, MD, Assistance Publique des Hôpitaux de Marseille, Marseille, France; Audrey Rico, MD, Assistance Publique des Hôpitaux de Marseille, Marseille, France; Adil Maarouf, MD, Assistance Publique des Hôpitaux de Marseille, Marseille, France; Gilles Edan, MD, Rennes University Hospital, Rennes, France; Jérémie Papassin, MD, Chambéry Hospital, Chambéry, France; Dorothee Videt, MD, Vannes Hospital, Vannes, France.

**Additional Contributions:** We thank Assistance Publique des Hôpitaux de Paris and French Clinical Research Infrastructure Network for Multiple Sclerosis for the support in regulatory aspects of the study, Amandine Bordet, MSc, Assistance

Publique des Hôpitaux de Paris, Pitié-Salpêtrière Hospital, Paris Brain Institute, and Yanica Mathieu, PhD, French Clinical Research Infrastructure Network for Multiple Sclerosis, Paris Brain Institute, Assistance Publique des Hôpitaux de Paris, for setting up the electronic clinical record form and the data management. We thank the Société Francophone de la Sclérose en Plaques, the Observatoire Français de la Sclérose en Plaques group, all the Covisep investigators, clinical research staff, and the patients for helping to collect these data. The named individuals were not compensated for their help.

## REFERENCES

- Zhou F, Yu T, Du R, et al. Clinical course and risk factors for mortality of adult inpatients with COVID-19 in Wuhan, China: a retrospective cohort study. *Lancet*. 2020;395(10229):1054-1062. doi:10.1016/S0140-6736(20)30566-3
- Multiple Sclerosis International Federation. The coronavirus and MS—updated global advice. Published April 13, 2020. Updated June 18, 2020. Accessed June 19, 2020. <https://www.msif.org/news/2020/02/10/the-coronavirus-and-ms-what-you-need-to-know/>.
- Brownlee W, Bourdette D, Broadley S, Killestein J, Ciccarelli O. Treating multiple sclerosis and neuromyelitis optica spectrum disorder during the COVID-19 pandemic. *Neurology*. 2020;94(22):949-952. doi:10.1212/WNL.0000000000009507
- Giovannoni G, Hawkes C, Lechner-Scott J, Levy M, Waubant E, Gold J. The COVID-19 pandemic and the use of MS disease-modifying therapies. *Mult Scler Relat Disord*. 2020;39:102073. doi:10.1016/j.msard.2020.102073
- Cao B, Wang Y, Wen D, et al. A trial of lopinavir-ritonavir in adults hospitalized with severe COVID-19. *N Engl J Med*. 2020;382(19):1787-1799. doi:10.1056/NEJMoa2001282
- Salje H, Tran Kiem C, Lefrancq N, et al. Estimating the burden of SARS-CoV-2 in France. *Science*. 2020;eabc3517. doi:10.1126/science.abc3517
- Wu C, Chen X, Cai Y, et al. Risk factors associated with acute respiratory distress syndrome and death in patients with coronavirus disease 2019 pneumonia in Wuhan, China. *JAMA Intern Med*. 2020. Published online March 13, 2020. doi:10.1001/jamainternmed.2020.0994
- Yan CH, Faraji F, Prajapati DP, Ostrander BT, DeConde AS. Self-reported olfactory loss associates with outpatient clinical course in COVID-19. *Int Forum Allergy Rhinol*. 2020. doi:10.1002/ialr.22592
- Richardson S, Hirsch JS, Narasimhan M, et al; and the Northwell COVID-19 Research Consortium. Presenting characteristics, comorbidities, and outcomes among 5700 patients hospitalized with COVID-19 in the New York City area. *JAMA*. 2020. doi:10.1001/jama.2020.6775
- Louapre C, Maillart E, Roux T, et al. Patients with MS treated with immunosuppressive agents: across the COVID-19 spectrum. *Rev Neurol (Paris)*. 2020;176(6):523-525. doi:10.1016/j.neuro.2020.04.009
- Novi G, Mikulska M, Briano F, et al. COVID-19 in a MS patient treated with ocrelizumab: does immunosuppression have a protective role? *Mult Scler Relat Disord*. 2020;42:102120. doi:10.1016/j.msard.2020.102120
- Stokmaier D, Winthrop K, Chognot C, et al. Effect of ocrelizumab on vaccine responses in patients with multiple sclerosis. *Neurology*. 2018;90(15 supplement).
- Chen N, Zhou M, Dong X, et al. Epidemiological and clinical characteristics of 99 cases of 2019 novel coronavirus pneumonia in Wuhan, China: a descriptive study. *Lancet*. 2020;395(10223):507-513. doi:10.1016/S0140-6736(20)30211-7
- Zheng KI, Gao F, Wang XB, et al. Letter to the editor: obesity as a risk factor for greater severity of COVID-19 in patients with metabolic associated fatty liver disease. *Metabolism*. 2020;108:154244. doi:10.1016/j.metabol.2020.154244
- Levy J, Bensmail D, Brotier-Chomienne A, et al. Respiratory impairment in multiple sclerosis: a study of respiratory function in wheelchair-bound patients. *Eur J Neurol*. 2017;24(3):497-502. doi:10.1111/ene.13231
- Verity R, Okell LC, Dorigatti I, et al. Estimates of the severity of coronavirus disease 2019: a model-based analysis. *Lancet Infect Dis*. 2020;20(6):669-677. doi:10.1016/S1473-3099(20)30243-7
- Gianfrancesco MA, Hyrich KL, Gossec L, et al; COVID-19 Global Rheumatology Alliance Steering Committee. Rheumatic disease and COVID-19: initial data from the COVID-19 Global Rheumatology Alliance provider registries. *Lancet Rheumatol*. 2020;2(5):E250-E253. doi:10.1016/S2665-9913(20)30095-3